

THE COMMUNITY MAGAZINE



BURHAM

WOULDHAM

PETERS VILLAGE

FEBRUARY 2021



*Published by the Church of England Parish of Burham & Wouldham
and sponsored by Wouldham Parish Council & Burham Parish Council.
Produced and delivered by local volunteers.*

THE CHURCH OF ENGLAND PARISH OF BURHAM & WOULDHAM
All Saints Church, Wouldham

RECTOR—Rev'd Mike Hayes

Usual working days are on Thursdays, Fridays & Sundays.

Tel: 07964 697556

E-mail: mikejhayes@hotmail.co.uk

CHURCH WEBSITE: www.wouldhamchurch.org.uk

Unfortunately at present the Church must be kept locked but arrangements for access can be made by contacting one of the Church Wardens:

<i>Church Wardens</i>	<i>Mr Tim Reed Mr Ken Kirk</i>	<i>Tel. 01634 666895 Tel: 07818 361608</i>
<i>Baptisms</i>	<i>Mrs Gwen Worcester.</i>	<i>Tel. 01634 672060</i>
<i>Weddings</i>	<i>Mrs Catherine Gore.</i>	<i>Tel. 01634 404742</i>
<i>Church Safeguarding officer</i>	<i>Mrs Helen Wells</i>	<i>Tel. 01634 685935 hwells2@btinternet.com</i>
<i>Monuments & Churchyard Enquiries</i>	<i>Rev'd Mike Hayes</i>	<i>Tel: 07964 697556</i>
<i>Church Flowers</i>	<i>Mrs Catherine Gore.</i>	<i>Tel. 01634 404742</i>
<i>Bell Ringing</i>	<i>Ms Tina Miles</i>	<i>Tel: 07967 795913</i>
<i>Church Treasurer</i>	<i>Mrs Nicky Grimes.</i>	<i>Tel. 01634 864319</i>
<i>Church Secretary</i>	<i>Mrs Gwen Worcester</i>	<i>Tel. 01634 672060</i>
<i>Church Magazine Editor</i>	<i>Mrs Mary Davis.</i>	<i>Tel. 01634 869650 zero.mexdavis247@btinternet.com</i>

View the Magazine online:

Church Website: www.wouldhamchurch.org.uk

Wouldham Parish Council: www.wouldhampc.com

Burham Parish Council: www.burhampc.kentparishes.gov.uk

If you would like to receive **The Diocese of Rochester Newsletter**, go to the link here for the E-Newsletter:

<https://www.rochester.anglican.org/communications/diocesan-publications/enewsletter/>

CHURCH OF ENGLAND WORSHIP

REV'D MIKE HAYES



Dear friends

We live in very trying times and it seems that every week brings yet more difficult news and lockdowns. We all know the importance of protecting others and yet that doesn't make it any easier. For many of us Christmas plans were suddenly changed and often curtailed, that made it difficult for us to feel very Christmassy. But celebrate we did, and we celebrated the hope that Christ who is the light of the world offers us in this darkest of times. Personally, my Christmas was much smaller this year just my brother and me, but we still had the chance to eat and drink too much, but also enjoying that rest that comes from being on holiday. Whilst times are certainly difficult, I can see a glimmer of light at the end of that tunnel with the arrival of the vaccine and many of the older members of our community having now received their first jab and some their second. This light at the end of the tunnel is the hope that Christmas brings to us all.

In the church's year we are now moving our focus towards Lent and Easter. Lent is that time when we reflect inwardly on ourselves and perhaps give up something or even better take something up. This year given that Lent will arrive at the time when the government will decide whether we can be released from lockdown, I am going to suggest taking something up, we all had too long giving up things. I decided that rather than doing my normal dry Lent I would do dry January instead so that when the weather improves, and pubs reopen, I am able to support our hospitality industry. So, I am going to take up being more sociable during Lent but at the same time increase the amount of time I devote to exercise.

That way I can arrive at Easter ready to celebrate the new life that will come from the arrival of the vaccine.

Best wishes to you all and stay safe as you stay at home

Chris

Curate for Burham and Wouldham.

THE MAGAZINE EDITOR

Mary, the Magazine Editor is stepping down
from the Editorship in the summer.



We're looking for a
New Editor
with the flair and
enthusiasm to bring the
digital edition 'alive'
with interesting and
relevant content—
possibly with it's own
website.

It's very easy to do with
the available publishing
software!

The position has been voluntary but that could change in relation the
Magazine's financial situation.
Interested? Contact the Editor or Rector.

THANK YOU

..... to Frosts Shop in Burham for providing oranges and sweets and
to the Shop in Wouldham for the oranges for Christingles.

..... to those who contributed on the Christingle, Wouldham Church
website page. So far, £267 has been raised for the work of The
Childrens Society.

If anyone has a prayer request for the Candle Time Prayer group on
Wednesdays, please e mail to: gwenworcester@hotmail.com.
All requests are welcome.



CHURCH OF ENGLAND FEBRUARY SERVICES

All Saints, Wouldham.

Holy Communion in church at 10.30 each Sunday.

At present we are continuing to hold a service in church but are encouraging all those who are able to follow on zoom to do so. We are constantly reviewing this and the guidelines may change. Please email Mike for the link -

mikejhayes@hotmail.co.uk

A Study Course on the Psalms. 5 Sessions on Zoom.

Mondays at 7.30 from 1 Feb -1 Mar.

Please let Mike know if you would like to take part.

Lent begins on Ash Wednesday 17 Feb and there will be a Zoom service at 7.30pm

Candle Prayer Time *The prayer group continues to pray at 7.30 every Wednesday. All are welcome to send in prayer requests to Gwen on 672060 or gwenworcester@hotmail.com*

Individual Prayer in church. During this period of restrictions, the church will be **open on Sundays from 12noon to 1pm ONLY.** **www.wouldhamchurch.org.uk**

CANDLE PRAYER TIME

Troubled times

but your churches are here for you

.....ask for a prayer for yourself or others

..... contact Gwen Worcester on 01634 672060 or *mikejhayes@hotmail.co.uk* to add your prayer request for our Candle Prayer Time group to say in their homes on a Wednesday evening at 7.30pm.

Join them also in prayer with a lighted candle from your home.
With much love to all in Wouldham, Burham & Peters Village.

From all at All Saints and The Church in Burham



ST MARY'S CHURCH BURHAM ME1 3XY
JANUARY 22 & 23 5PM-9PM

FILAMENTS II

Installation of threads light and projection

ARTISTS

Elizabeth Burman

Karen Crosby

Rosie James

Ruth Payne

Linda Simon

This event was to have taken place on Jan 22nd but had to be postponed. However we do intend to put the event on just as soon as we are able but cannot put out a new date yet. A new date will be posted on www.facebook.com/stmarysburham just as soon as we know.



Supported using public funding by
**ARTS COUNCIL
ENGLAND**



FEBRUARY Services at The Church in Burham (Methodist)



Dear friends,

Once more we are in lockdown and therefore we are unable to hold our weekly Sunday Services nor any of the other activities which we were able to have before the beginning of last year. When the current lockdown lifts, and churches are once again permitted to hold in-person services, we would love for you to join us for **worship at the Church in Burham every Sunday at 10.30am**. Any changes will be announced in this Magazine and will also be displayed on the Church Notice Board and the Notice Board outside the Community Centre.

Alternatively, we would be delighted to see you at one of our **online circuit services every Sunday at 10.30am**.

You can also dial in and listen to these services by phone if you are not online. See <https://www.nkmethodists.org.uk/news/invitation-to-worship-from-home.html> for details of all online services.

We were so pleased that many families came along on Christmas Eve to collect their bags ready to assemble the Christingles and we were grateful to Monica Wilding for leading the online service. She stepped in at the last minute after Rev. Naomi Oates' baby decided to arrive a month early! We send our congratulations and best wishes to Naomi and husband Luke and look forward to meeting baby Rachel in due course. Naomi will now be on Maternity Leave until October and in the meantime, Rev. Bonni-Belle Pickard will be looking after our Church. Details of how to contact her are at the bottom of this page.

THE CHURCH IN BURHAM (Methodist), Church Street, Burham
MINISTER The Revd Bonni-Belle Pickard 07590564477
Email: bonni-belle.pickard@methodist.org.uk

Stewards Eileen Smith Tel. 01634867022

Joyce Brown Tel. 01634864413

Rod Murr Tel. 01634868075

*Requests for Baptisms, Weddings, Funerals to: Rev Bonni-Bell Pickard
or one of the Stewards.*

WOULDHAM PARISH COUNCIL

FEBRUARY

NEW WEBSITE: *Wouldhampc.com*



The Parish Council held a meeting on January 12th via Zoom. The next meeting will be in 2nd February. Any of our residents can log into this meeting, contact the Clerk for details.

VILLAGE IN BLOOM

The Wouldham Community Initiative with the support of the Parish Council will be organising Village in Bloom this year, they have a small budget to get things started, we will be advertising more closer to the spring, this is something to look forward to, spring and flowers in the village.

CENSUS

This year is the census. It is due on March 21st. The Census Engagement Manager for this area has asked for our help to advertise this fact. They will be trying to get people to apply online although there will still be paper options.

This is vitally important, it affects the way the NHS, local and central Government and Charities ensure that services are offered where they are needed most. Our Councillor Theresa Gray is happy to help anyone who needs help with filling out their form, contact the clerk if you need any help. *See page 25.*

ANTI SOCIABLE DOG OWNERS

The Parish Council are working with Neighbourhood Watch to push for more enforcement of residents who do not pick up after their dogs, letters are going out to all residents to highlight what they can do if they witness someone not clearing up after them. Signs will be going up to highlight fines and we are asking for the dog warden and PCSO to look out for offenders. We are determined to stamp out this disgusting practise.

TMBC have a Public Space Protection Order on the whole area, this enables the issuing and enforcement of fines for this anti-social behaviour.

NEIGHBOURHOOD WATCH

We are still looking for volunteers to join the NHW in Wouldham, we have an experienced Councillor – Steve Rimmington who can advise and offer assistance. It would help the village to stay safe in these uncertain times. Contact srimmingtonwpc@gmail.com

COVID

We hope you are all keeping well and as safe as you can.

continued

continued

There is concern about the amount of traffic still going through the village during this lockdown, just a reminder as if you needed it to stay home as much as you can and not to go out unless absolutely necessary.

The food bank is still available if you are struggling, please contact the Wouldham Initiative.

The PC run a charity called the **Henry Peters Charity** which will help residents attend Dr's or hospital surgeries, this will also include residents trying to get to their vaccine appointment. Please contact the clerk.

FLY TIPPING

As fly tipping also seems to have reached epidemic proportions, a reminder that you can report to: **waste.services@tmhc.co.uk** (or contact the clerk who will do that for you)

You can also download the app Community Eye, you can take photos of the fly tip which will go straight to the relevant authority.

CONTACT: Clerk Nicky Grimes **clerk@wouldhampc.co.uk**
07904 281 522 (Mon-Fri 8.30am – 12.30)

Chair: Eddy Bell **ebellwpc@gmail.com**

ALL SAINTS CHURCH, WOULDHAM, WEATHERVANE APPEAL

For 218 years the tower at All Saints Church in Wouldham has been surmounted by a fine iron weather vane. Sadly after more than 200 years it is in need of urgent restoration. The church is seeking to raise £2500.00 to enable this to be undertaken by local craftsmen, this will involve removing the weathervane and transporting it, restoring the iron work and the original gilding, finally reinstating atop the tower for another 200 years. Please consider giving a donation towards preserving this beautiful iconic part of our village history. Thank you.

You can donate by visiting:

[www.https://www.justgiving.com/crowdfunding/weathervanewouldham](https://www.justgiving.com/crowdfunding/weathervanewouldham)



Or, if you prefer, you can send a donation by cheque (*payable to Burham & Wouldham PCC Acc.*)

Send to: Mrs Heather Lloyd, 40 Downs View, Burham, ME1 3RR

I wish to donate £..... to the Weather Vane Appeal.

My name

Contact details

SCHOOL LANE
BOARDING KENNELS & CATTERY

Authority licensed & inspected annually---

Local family run business

Long/ Short/Stays & special rates for extra long stays

SUPPORTED BY LOCAL VETS

01634 683149

Find us on Facebook



BARRY BLACK DOG TRAINING

TELEPHONE HELP GIVEN @ REASONABLE RATES.

ALSO ONE 2 ONES- HOME VISITS OR

AT ONE OF OUR GROUP CLASSES

Behaviour issues - puppies – obedience & agility classes

Professional Hands on Trainer

*With over 36Yrs experience. KIND & UNDERSTANDING
methods used . 01634 669885*

Find us on Facebook



BREEDERS OF QUALITY, GOOD NATURED, HEALTH

CHECKED, CHOCOLATE LABRADORS,

LABRADOODLES

& BRITISH SHORTHAIR CATS.

ALL PUPPIES & KITTENS ARE VET CHECKED &

APPROVED. CALL 01634 669885 *Find us on Facebook*

FOR PUPPY & KITTEN AVAILABILITY

TONBRIDGE AND MALLING RAMBLERS



Our friendly group is one of 13 Ramblers groups in Kent and part of the national Ramblers walking organisation. In normal times, we offer a variety of group walks, mostly on Sunday mornings with additional mid-week rambles each month. Our walks are usually circular and about 5-6 miles in duration. We explore the beautiful Kent countryside from different starting points within the Tonbridge and Malling area and, occasionally, further afield. New members are welcome, as are those wishing to try us out before joining Ramblers.

Group walks are currently paused due to Lockdown/Tier 4 restrictions. We will be restarting as soon as we can, dependent upon government guidelines and Ramblers national guidelines. Meanwhile, you can find out more about our group at: <http://www.tonbridgeandmalligramblers.org.uk>.

One of our activities is to ensure that public footpaths within the Tonbridge & Malling area are readily accessible to all walkers. We have footpath observers in each parish to check paths and report issues such as broken stiles and gates; broken or missing footpath signs; fallen trees and other obstructions. We always welcome help with this so, if you are out walking and encounter a problem, please do raise an alert. You can do this by logging the fault yourself on the Kent Country Council (search for 'KCC public rights of way') or by emailing details (with photo and path number/location) to info@tonbridgeandmalligramblers.org.uk.

I will update again once we're able to restart our group walks.

THE HENRY PETERS CHARITY

This charity was set up by Henry Peters in his will around 1912 to be distributed to the sick and poor of Wouldham by the Parish Council. The trustees have agreed that the payments could be used to fund residents getting to and from the doctors' surgery or hospital.

To apply please contact the Council clerk on 07904281522 or clerk@wouldhampc.co.uk.

BURHAM PARISH COUNCIL/ NEWS FEBRUARY 2021



Keep up to date with Parish Council business, visit:

Website: www.burhampc.kentparishes.gov.uk

Facebook page “Burham Parish Council”

Welcome back after the Christmas break. I hope you all had a lovely Christmas albeit smaller than normal, a good New Year and that Santa was kind to you all.

Virtual monthly meetings continue with a reduced agenda. Any items not included with these virtual meetings will not be forgotten, just on hold for the time being. Legally we are able to use virtual meetings currently up until May 2021 but it is hoped that face to face meetings can resume before then, when guidance changes.

Whilst the Covid 19 situation continues and we are forced to have Parish Council meetings virtually, as a reminder residents can still join in the meeting. An e-mail address would have to be provided. Any resident wishing to join in should contact me by noon on the Friday before any such meeting to have any questions/queries addressed to council members.

Pilgrims Way (Split Road) was litter picked by TMBC contractors just before Christmas.

New Court Rd footway/cycleway (breaking up from Church Street to Bell Lane): This was reported to KCC Highways (as the acting authority) back in July 2020. Whilst work was carried out early December, it was below standard and not acceptable. The Contractors are accepting liability. Rectification work will be organized during the day but may not be carried out until early Spring.

A “Lord Whiskey” clothing bank has been placed at the recycling site. This is an animal sanctuary charity which also pays a “rent” contribution to have their clothing banks sited. All clothes, paired shoes, blankets and towels, together with other items can be placed inside.

Our website will be changing shortly, details will follow in due course.

Some TMBC recycling sites will be closed, but NOT Burham. A phased approach to the removal of the other 30+ sites commenced from January.

continued.....

continued.....

We would like to thank Elf Bell who assisted Father Christmas by hanging Christmas treats for the children to collect on the tree at Whitehouse Crescent Green.

Burham United Charities are always available to the residents of Burham to cover the transport costs for any type of medical appointments including the Covid 19 vaccination. If you need any assistance, please contact Dave Young 01634 867669 or Roger Kiralfy 01634 869900.

Litter/Dog fouling: Please ensure that you take any litter home or place in the bins provided and do not just throw on the ground. Also, please can extra effort be made to pick up and dispose of appropriately, in the bins provided, any dog fouling.

There are numerous areas around the village now where dog poo bags are available for use if you happen to forget yours. There appears to be an increase on dog fouling on the footways which is bad news for all.

Cardboard: The weight, when completely full, of the bank has varied quite dramatically in 2020, ranging from 0.4 tonne to 1.42 tonne. Obviously the heavier the load, the more funding we receive. Please could you take care to break down any cardboard into smaller pieces to ensure that better use of the space is made.

If you have any items that you would like the Parish Council to discuss, just give me a call on 01634 685936, e-mail me on pam@burhampc.co.uk or join in at the next scheduled meeting, which is due 22 February 2021 - Virtual. Pam Saunders – Clerk.

BURHAM UNITED CHARITIES

Burham United Charities are a local charitable organisation that provides assistance to those in need living within the old parish boundaries. (i.e. Burham Village and parts of Blue Bell Hill).

Every year the Charity gives grants towards the Winter Fuel costs of retired villagers on restricted incomes. It's always available to the residents of Burham to cover the transport costs for any type of medical appointments including the Covid 19 vaccination.

They can also offer one off grants to help alleviate particular instances of hardship for any resident of the parish.

Parents of school age children may obtain help with some of the costs associated with schooling.

If you, or someone you know, is on a low income or has an exceptional need which is not provided for by Welfare Benefits, we may be able to help. Contact:

Dave Young (01634 867669) or Roger Kiralfy (01634 869900)

WILDLIFE IN THE GARDEN

If there has been a joy of being in 'lock down' its being out in the garden most of the time and watching the wildlife more closely.

Sitting in idle moments I see how many different birds are bathing in the waterfall on the pond. Even on the coldest days they need feather maintenance and I enjoy the 'pecking order' amongst them. The little curtsying wren and others more timid wait out until the squabbling blackbirds have had their turn. Then they all scarpers when great big pigeons stride in. I notice that the bathroom isn't in good order after pigeon ablutions; leaving quite a greasy pond surface.



A whole flock of goldfinches are continuing to find dandelion heads to feed on and when they bathe they all come along together. With the splashing of water and the flashes of red and gold in their feathers, they are so lovely. Also, occasionally I catch sight of Mr & Mrs Blackcap quietly waiting their turn and the Robins, not timid but seemingly modest. They

come for their bath at dusk and even in the dark.

And as I write there are the redwings. I spot a large flock feasting on the berries in the hedges and I think also worms in the meadow. Looking them up, I see that they are winter visitors from northern territories. They sport a speckled breast like a thrush but with a scarlet patch under the wing and a creamy orange stripe across the head. They also will come and bathe but are nervous and easily spooked.

I know they will leave soon to go back to their breeding territories.

As John Clare wrote:

"they come and go on winter's chilling wind."

A pair of song thrushes in the garden are special.

Last year it upset me when a thrush flew into a window and it looked like it may have broken a wing. It hopped off into the hedgerow and no doubt would fall prey to the fox if it didn't recover. I don't know whether it survived but happily there's a pair of thrushes out there together now.

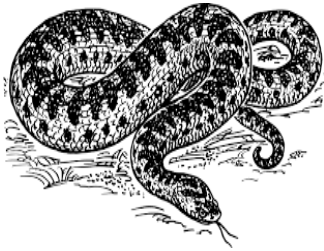
They sing so beautifully at certain times of the year and are particularly good gardeners. All around the garden I've found little graveyards of snail shells that have been smashed against their stone anvils. I'm delighted that the thrushes are keeping down the numbers of snails that would otherwise be champing their way through my flowers and vegetables.



continued

continued

With the pond come the frogs, followed by lots of lovely little tadpoles and froglets. They too are brilliant gardeners and will eat those horrid, horrid slugs in the vegetables. To try to encourage frogs more, I constructed an underground hibernaculum for their hibernating. I can't tell if they're using it but last summer a little mouse moved in!



In the summer, I caught site of a female adder just silently slipping away into the long grass.

Adders have brown diamond markings along their backs—the male's are more strikingly dark brown. Some years ago there were lots of adders here but in recent years I've seen none. It's thought that one reason for their decline might be that winters are

getting warmer. If they come out of hibernation early during a warm period, they then can't survive if it turns cold. Hopefully the female adder I saw will hibernate safely and be 'in the family way' next year. Today I spot a kestrel hovering over the garden and hope it might be hunting some prey and dive down but then it's mobbed by the crows and it flies off. A few years ago at Tyland Barn (Kent Wildlife Trust), I was thrilled to see live webcam pictures of a kestrel nest box with chicks high up on a telegraph pole close to the busy Bluebell Hill road. I thought that they might be encouraged to nest here if there was a suitable box. So armed with the best wildlife information, the right kind of box was constructed and with the help of family and a very long ladder, it was installed at the top of the tallest tree in the garden. Well, sadly it hasn't been taken. It may not be high enough up and I'm told that they might prefer to nest on the quarry cliffs. How much more comfortable I think they'd be to have a roof over their heads!

Over Christmas I checked out the little bluetit nest boxes that have been used each year and found beautiful, delicate little mossy nests inside. Exquisite as they are, they apparently harbour all sorts of mites and bugs that can harm the birds. So a good Christmas clean out seemed timely. Whether the bluetits and kestrels alike and indeed the frogs appreciate my efforts though is very questionable!

Mary Davis

PARISH INFORMATION

BURHAM PARISH COUNCIL

Pam Saunders – Clerk.

The Parish Office, Rochester Road. Burham. ME1 3RJ

Opening times: Mon-Frid., 10am—2pm

Tel: 01634 685936. Email: pam@burhampc.co.uk

www.burhampc.kentparishes.gov.uk. Meetings usually the last

Monday in the month.. The next Council meetings: 22rd February.

Format of meeting (either via MS Teams or normal face to face) to be agreed nearer the time. *See page 10*

WOULDHAM PARISH COUNCIL

Parish Clerk—Nicky Grimes 07904281522

clerk@wouldhampc.co.uk www.wouldhampc.com

Council Meetings are held in Wouldham Village Hall. Usually 1st

Tuesday of the month The next meetings: 2nd February by ZOOM.

See page 6

COMMUNITY WARDEN:- Vivien Hickmott 07813694140

POLICE - PCSO Samir Patangwa. Non emergency tel. no. – 101

PETERS VILLAGE NEIGHBOURHOOD WATCH

Steve @ Petersvillagenhw@gmail.com



TRANSPORT

Bus Services: Arriva no.155. There are to be additional routes as 'lockdown' is lifted.

Clarks of London's commuter coach service. The 764a and 764b service picks up from bus stops: Keepers Cottage Lane (05:52 & 06:30) & Village Road (05:50 and 06:28). www.clarkescommute.co.uk or call 020 8778 6697.

A Free Bus to Tesco leaves Wednesday, 10am from Burham village only.

HALLS FOR HIRE

Burham Old School Community Centre – 01634 863322

Burham Village Hall – 07842883028

'The Church in Burham' Hall – 01634 867022

Wouldham Village Hall – 01634 864319 clerk@wouldhampc.co.uk

ALLOTMENTS Different size allotments are available to grow your own fruit and veg. **Burham:** Contact: Dave Young 01634 867669.

Wouldham: Contact Sue 01634 682363



Phoenix Medical Practice

33 Bell Lane, Burham, ME1 3SX. Tel: 01634 867982.

Opening times

Monday & Thursday: 8:30 am - 5:00 pm

Tuesday, Wednesday & Friday: 8:30 am - 6:00 pm

Dispensary Opening Times

Monday & Thursday: 8:45 am - 12:00 pm

2:00 pm – 4:45 pm

Tuesday, Wednesday & Friday: 8:45 am - 12:00 pm

3:30 pm – 6:15 pm

www.phoenixsurgery-burham.nhs.uk

NHS 111 can help if you have an urgent medical problem and you're not sure what to do. NHS 111 is available 24 hrs a day, 7 days a week. Get NHS help online or on the phone.

To get help from NHS 111, you can: -
go to 111.nhs.uk (for people aged 5 and over only) or telephone 111

DEFIBRILLATORS: Situated:

1. Outside Burham Parish Office.
2. Outside Wouldham Village Hall.
3. Outside Wouldham Village Store.

If a machine is needed, call 999 for the code and instructions.

PRESCRIPTIONS. If you are unable to collect your prescriptions and live in Burham, Wouldham or Peters Village, the Church offers a collection service. Contact: Rachael Harris. 07725289194

The surgery require 72 hours to prepare the prescription and the volunteers collecting these prescriptions need 24hrs notice.

HEARING AIDS.

HiKent Hearing Clinic, TEMPORALLY SUSPENDED monthly—on the 2nd Thursday the month. **10.30-11.30 hrs at Burham Community Centre.** Aftercare clinics for NHS hearing aids. Free of charge & open on a drop-in basis. No need for an appointment. <https://hikent.org.uk/>

SHOPS

Frosts Service Station & Store, Rochester Rd, Burham. 01634 861228, Opening times: *To be confirmed.*

The Vale Bakery, 209 Rochester Rd, Burham 01634 861572.

Closes 4pm. Closed Sunday & Monday.

VISITING HOUSEHOLD WASTE RECYCLING CENTRES DURING CORONAVIRUS

Our household waste and recycling centres (HWRCs) at **Capstone, Hoath Way, Cuxton Site (Medway Council) & Tovil (Kent County Council)** are open for essential use only. You can only use these sites if there's a risk of injury, health or harm by storing your waste at home. To be able to visit a HWRC **you must book a slot online in advance**. Please note that slots are very limited in order to maintain social distancing for staff and visitors. You will only be able to book one visit in any 4 week period per household to ensure everyone can use sites safely. Kent residents visiting Medway Council sites must show identification . <https://www.kent.gov.uk/waste-planning-and-land/rubbish-and-recycling/visiting-a-hwrc-during-coronavirus>

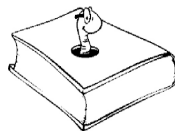
<https://www.medway.gov.uk/info/200132/waste-and-recycling/1123/book-a-vehicle-into-a-kent-or-medway-household-waste-and-recycling-centre>

SATURDAY WASTE COLLECTION—SUSPENDED UNTIL FURTHER NOTICE

TMBC Helpline 01732 844522 www.tmbc.gov.uk

Book Club -

Meet 3rd Wednesday of the month at various local venues. Contact - Gwen Worcester 01634 672060



Book Exchange -

The Church in Burham, Church St. **Not currently running.** Bring books you have read and exchange them for others from our good selection. Tea and coffee are served together with homemade cake for which we ask for a donation of £1. Contact Eileen Smith 01634867022

KCC MOBILE LIBRARY: Now monthly on Tuesdays:

FEBRUARY 9TH

Wouldham, Walter Burke Ave - 13.15-13.45hrs.

Wouldham, Ravensknowle - 13.55-14.25hrs.

Burham, Village Hall - 14.35-15.35hrs

continued

MOBILE LIBRARIES DURING CORONAVIRUS

Maidstone's Mobile Library is out and about in your community, running a collection service from outside the vehicle. A large selection of quarantined books are available.

It's part of KCC Library and free to use & join. We offer a wide range of services on board and return dates are extendable.

A range of fiction are available; large print fiction, audio cd's, cookery, travel, history and children's books for home schooling.

So make a visit to discover a whole new world of free entertainment on your doorstep!

For further advise or book requests please e-mail:

joanne.woolgar@kent.gov.uk or telephone 0300 041 8558

or go online to:

<https://www.kent.gov.uk/leisure-and-community/libraries/visiting-a-library/mobile-libraries-during-coronavirus>

Your Mobile Library – The Brain Train

Never has there been a better time to read, or listen to, books. Your mind is transported away from the constraints of lockdown, to worlds created only in your imagination. The book, whether read or heard, creates the scenarios in which your own vivid images can play a part in a way no film or TV series can.

When watching the latest blockbuster or comedy, you are the passive recipient of someone else's imagination, their illusion. With a book, you are the producer and the director from your perspective. The images created are yours alone. Your brain is actively involved from the beginning to the end.

That's what I love about my job. I carry the keys which unlock peoples' imagination and, every month, I'm in your area finding out about your impressions of the books I carry. Whether it's a cunning crime novel, or a riveting romance or even a telling travel read, I bring you the latest authors who want you to interpret the places, people and plots that they have created. Happy reading.



Joanne Woolgar.

Mobile Librarian, Kent County Libraries

BURHAM CHILDREN'S CENTRE

**Due to the current situation with Covid-19 all our
Children's Centres are closed.
FOR SUPPORT & ADVICE PLEASE PHONE OR
EMAIL: tmbc@kent.gov.uk
or see our FACEBOOK PAGE**

Bell Lane, Burham. ME1 3SY Tel: 03000 418008

Free sessions for children aged 0-5 years— **TUESDAY, & FRIDAY**

Closed on Monday, Wednesday & Thursday

3rd Tuesday of the Month only 1.00pm –3.00pm. Well Baby Clinic.

Development Reviews 1.00pm-14.30pm

Come and get your child weighed and speak to a health visitor.

Friday am 9.30am –10.30am. Baby Stay & Play Birth - Crawlers

11.00am—12.30pm. Stay & Play.

BURHAM PRE-SCHOOL, BURHAM VILLAGE HALL

'Good ' OFSTED inspection - April 16.

We welcome children aged 2 -5yrs.

Sessions:

Mon - Fri* am 9.15 - 11.45.

*Fri. am is for rising 5's only

Mon - Fri pm 12.20 - 2.50.

Mon - Fri. Lunch Club 11.45 - 12.20

Optional 'early bird' drop off at 9am for £1.0.

Come along and visit to see if we are right for you!

Visit our website: burhampre-school@weebly.com

Supervisor - Tracey Beechey Tel: 07920 599287/07710 829954

Email: Burham.pre-school@hotmail.com

JELLYBEANS PRE-SCHOOL, WOULDHAM VILLAGE HALL

Our Ofsted Inspection found Jellybeans to be 'good'.

Sessions :

Mon - Fri am 9.15-11.45

Mon - Thurs pm 12.25 - 2.55

Mon - Thurs Lunch Club 11.45 - 12.25

Early drop off option available.

Feel free to visit at any time, no appointment necessary.

For further information please contact-

Mrs Donna Cook (Supervisor) on 07932551771

CHURCHES

Church of England Parish of Burham & Wouldham:

1. **All Saints, Wouldham.** Holy Communion every Sunday at 10.30am and, afterwards, open to visitors till 2pm. Online Zoom worship continues. Funerals and weddings may be held in church with limited numbers. Also online services. *See page 3 for update*
2. **St Marys Church, Burham.** Old Church Rd,
Open daily 10.0—4.0 pm . Closed during ‘lock down’
A redundant Anglican Church under the care of the ‘Churches Conservation Trust’. Occasional special C of E services are held there and events run by the Friends of St Marys. *See page 4*
3. **The ‘Church in Burham’ (Methodist). Church St.**
Every Sunday at 10.30am. *See page 5 for update details*
Also online services.

EATING & DRINKING

The Butchers Block Pub/Restaurant/takeaway, Burham - 01634 786626

The Robin Hood Pub/Restaurant/takeaway. Common Rd, Burham
01634 861500 (*page 20*)

The Windmill Inn /Restaurant/takeaway, Burham - 01634 864570

Happy House Chinese Takeaway, Burham - 01634 668326

Fish & Chips Van: 07840 181 091

Tues.	Bluebell Hill Village hall.	4pm-8pm
Wed.	Burham car park	4pm-8pm
Thur.	Cuxton main street.	4pm-8pm
Sat.	Wouldham car pk. alternate weeks.	4pm-8pm

Medway Inn & Rubys Indian Restaurant/Takeaway, Wouldham.. 869181

Watermans Arms, Wouldham. 01634 681830

THEATRE/MUSIC/FILM/ART

St Marys Old Church, down by the river. **Filaments II. Installation of light and Projection.** See page 4

All Saints, Wouldham Church Choir. Choir practice on **Thursdays, 7.30pm**, All Saints Church, Wouldham.

New junior and senior members are most welcome.

Enquiries: Sandra Holman: 01634-867586

Church Bell Ringing All Saints Church, Wouldham.

Tina Miles Tel: 07967 795913

Film Club The Church in Burham, Church St.

Contact Eileen Smith 01634867022

The Robin Hood

364 Common Rd, Blue Bell Hill, ME5 9RJ
01634 861500

TAKEAWAY MENU

Frid & Sat 5-9pm. Sun 12- 6pm
Free delivery within 3-mile radius
See our: Facebook Robin Hood-Pub

Burgers

The Classic

8oz homemade chargrilled burger topped with crispy bacon, melted cheddar, gherkins and baconnaise sauce. Served in toasted brioche bun with sliced tomato and crisp lettuce £8.50

The Mexican (hot)

8oz homemade chargrilled burger topped with salsa, jalapenos, Smokey Monterey Jack cheese and chipotle sauce. Served in a toasted brioche bun with sliced tomato and crisp lettuce £9.25

The Italian

8oz homemade chargrilled burger topped with melted mozzarella, crispy Parma ham and garlic mayo. Served in a toasted brioche bun with sliced tomato and crisp lettuce £9.25

The Blue

8oz homemade chargrilled burger topped with melted stilton, caramelised red onion and chargrilled mushroom. Served in a toasted brioche bun with sliced tomato and crisp lettuce £8.99

Buttermilk Chicken

Crispy coated buttermilk chicken breast topped with honey and mustard mayonnaise. Served in a toasted brioche bun with sliced tomato and crisp lettuce £8.95

Bangkok Bad Boy (V) (medium)

Spicy oriental inspired burger with mixed vegetables, coriander, chilli, lemongrass and lime leaf, coated with black onion, cumin seeds and crunchy red lentil crumb. Served in a toasted brioche bun with sliced tomato and crisp lettuce £8.75

Pub Classics

Beer Battered Cod

Large freshly battered cod fillet coated in our own beer batter. Served with chips and tartare sauce £9.90

Pork Belly

Tender slow cooked pork belly served on top of buttery mash, braised red cabbage and apple with cider gravy £10.95

Chilli and Rice (mild)

Homemade medium chilli served with rice £9.50

Sausage and Mash

Three Old Spot sausages served on top of buttery mash with red onion gravy £9.90

Kid's Menu £4.50 each

Sausage and chips

Beef burger in a brioche bun with chips

Southern fried chicken goujons and chips

Appetisers and Sides

Southern fried chicken goujons £3.95

Garlic ciabatta bread (V) £3.25

Cheesy garlic ciabatta bread (V) £3.75

Crispy fried potato skins topped with bacon and cheese £5.25

Beer Battered onion rings (V) £3.25

Chunky gourmet chips (V) £2.75

Chunky gourmet chips with melted cheese (V) £3.25

Chunky gourmet chips with chilli and cheese £4.95

Skin on skinny fries (V) £2.75

Sweet potato fries (V) £3.55

Sauces £0.60p each

BBQ

Garlic Mayo

Baconnaise

Chipotle

Mayonnaise

Firecracker

Sweet Chilli

Puddings £4.25 each

Chocolate Fudge Cake

Caramel Apple Pie

Salted Caramel Brownies

Sunday Roast (available Sundays only. Pre-order required on Sat)

Beef, Pork, Chicken Breast or Vegetarian Nut Roast

Adult £10.50 Kid's £5.50

All served with roast potatoes, seasonal vegetables, Yorkshire Pudding and gravy

AP SERVICES



GRP FLAT ROOFING SPECIALIST

ROOFING REPAIRS

ROOF WINDOWS, FASCIAS, SOFFITS, CLADDING & GUTTERING
EXTERIOR PAINTING, FENCING, DECKING, PAVING & MORE...

CALL NICK ON:

07949 588 464 & 01634 262 582

www.ap-services-kent.co.uk

FOOT CARE

For young or old in the comfort of your own home.
Fully Qualified & Insured Foot Health Professional.

Tim Cook, DipFH, MCFHP, MAFHP

Treatment for most foot conditions including:

- nail trimming,
- ingrown or fungal nails,
- corns and callus,
- cracked and dry heels,
- athletes foot and verrucas,
- treatment for diabetic patients to maintain good foot health.



Call **07450 943098** or email theathletesfootcare@hotmail.com

T. T. CARPETS & FLOORING

DOMESTIC & COMMERCIAL SUPPLIED & FITTED

Carpet, vinyl, laminate, luxury vinyl tiles,
carpet tiles, safety flooring.

Call us today for all your flooring needs.

Free estimates & measures. Fully insured.



Tom Whiterod 01634 669033 / 07957757905

email: t.carpetsandflooring@yahoo.com

Find us on Facebook



BROADLEAF
TREE SURGERY

For your free quotation call
0800 999 53 23
07429 903 594

“ High quality & professional tree care.
Fully qualified and insured with over
14 years of experience. ”

- Tree removal
- Crown reductions
- Hedge trimming
- Deadwooding
- Crown thinning
- Stump Grinding

info@broadleaftreesurgery.co.uk



FEBRUARY in Your Garden

‘Just living is not enough, one must have sunshine, freedom and a little flower’

Whilst we may still be held in limbo with ‘normal life’, the days are now stretching out and making way for spring. The signs are there, and the dullness of the winter garden is being brightened daily by spring flowers and bulbs – Primroses, Snowdrops, Narcissi and Hellebores are all bursting into flower now. Winter Jasmine, Skimmia & Witch Hazel will also still be blooming and scenting the garden on those days that are pleasant enough to enjoy time outside. Single stems can be brought indoors to enjoy the scent around the home too.

The early part of the year is a busy time in garden as the hopefulness of the new season presents itself, and given that many more people have realised the importance of green spaces and the sanctuary that can be found within their own gardens, it is with hope that even as life (hopefully) starts to return to normal in Spring, that the calm and enjoyment of our own gardens and local green spaces isn’t forgotten. A great deal can be achieved in a small garden space, whether you are keen to grow your own, or whether you want to encourage wildlife, or help out pollinating insects – it’s all possible even in a small space.

Spring is the time to start getting prepared. If you have pots left over from last years annuals, clean them out (you can spread the spent compost on the border), also if you left stems or annuals in the garden for overwintering insects you can now start to tidy these up. Spend some time browsing through seed catalogues for both flowers and veg, as plenty of veg can also be grown in pots or garden borders – often they will tell you how big the plants will get and whether they are good for pollinators etc. too. Ornamental grasses can be cut back to the ground now, & Fuschia and Salvia can also all be given a good prune to reduce their size and maintain their shape, always cutting back to a bud where possible and removing some of the middle growth so that the plant doesn’t become congested.

In the veg garden, as long as the soil is not waterlogged or frozen, it’s time to plant out onion sets, and you can also sow a further set of broad beans to keep the harvest coming along. Keep harvesting any winter veg that may be left, make sure you have harvested the last carrots, parsnips, leeks and brassicas before spring as they will want to set seed once the temperatures start to rise and then the veg will be inedible. Keep an eye out for Purple Sprouting Broccoli as this will be sending out shoots now, but they can often go over quickly so keep on top of them. and stock up on anything that is missing.

continued

continued.....

A great place to start with veg is to grow the things you like to eat – then progress from there.

Now is also a good time to review your seed stores, organise them into sowing months,

February is also a good time to sow Chillies as well as Spring Onions and summer cabbages. The Chillies will benefit from a warm windowsill but the rest will be fine in the greenhouse or shed (ideally by the window if you have one) until the weather is warmer.

Now is also an ideal time to start a compost heap, or to turn out any that have been busy making compost over the last year. The compost can then be used on the garden beds, or for potting up seedlings etc. If there are bits that haven't yet been processed by the worms and organisms, then just return them to the heap and continue to add to it throughout the coming season ready for next years compost. If starting a compost heap from scratch, there are many different options available, from the plastic 'dalek' style ones, to wooden slatted ones, or tumbling bins that roll to turn the compost with less effort. Or you can simply make one from pallets screwed together, or from chicken wire wrapped around 4 posts. The principle for all (except the tumbling variety) is the same, locate your compost bin direct on the earth, in a semi-shady position, as this will encourage the beneficial organisms that will break down your waste from the ground up into your heap. Start adding any compostable material such as veg & fruit peelings, tea bags & coffee grounds, garden prunings, lawn cuttings (not if you have used chemical weedkillers though), old annual plants from pots, and paper shreddings. If you can mix it all up occasionally it will encourage the break down further, but it's not essential as the worms and organisms will soon be busy decomposing all that goodness and creating a lovely compost ready for you to use. On average you should create a reasonable amount, depending on the size of your composting area and the amount of raw waste you add, and it's an excellent way to recycle your home waste & reduce your kerbside collections.

Other things to be doing in the garden now:

Continue to keep bird feeders and baths topped up, and defrost in freezing temperatures & take part in the RSPB Garden Birdwatch – this year from the 29th to 31st Jan – you can download an identify chart from the RSPB, & enjoy a Lockdown hour recording what wildlife comes to your garden. Make sure you top up the feeders before hand !!

continued

continued

Mulch around fruit trees and rose bushes now ready for the new season, and finish any pruning required (not cherry/plum/ greengage as these are pruned in the summer).

Tidy the shed, throw out anything that needs to go, and clean tools in preparation for the new season

Move pots of spring bulbs to where you can see them, & move the winter ones away until they have finished & can be stored again for next year

Sue Durrani, Allotment Association, Wouldham

Wouldham allotment plots are available. [Contact Sue: 682363]



2021 CENSUS

We are required by law to provide our household information for the Census this March 21st.

The Census is a once-in-a-decade survey that has been carried out every decade since 1801, with the exception of 1941.

It gives us a snapshot and the most accurate estimate of all the people and households in England and Wales – the most detailed information we have about our society now and what it's likely to need in the future. The

information it collects helps plan and fund services in your area. This could include transport, education and healthcare, police and other public services.

It will be the first to run predominantly online, with households receiving a letter with a unique access code, allowing them to complete the questionnaire on their computers, phones or tablets.

Everyone should have the support they need to fill in the Census. If you, or anyone you know, needs help, there's a wide range of support services available. These include a contact centre that can give you help over the phone and guidance in a range of languages and accessible formats, including paper questionnaires and large print.

AP SERVICES



GRP FLAT ROOFING SPECIALIST

ROOFING REPAIRS

ROOF WINDOWS, FASCIAS, SOFFITS, CLADDING & GUTTERING
EXTERIOR PAINTING, FENCING, DECKING, PAVING & MORE...

CALL NICK ON:

07949 588 464 & 01634 262 582

www.ap-services-kent.co.uk

SMART FLOORING

**Carpet, Vinyl
&**

Laminate Specialist

Shop at Home Service

Free estimates & advice

Shane Roots:

Home 01634 957955

Mobile 07918 145755



*Elwood
Painting and
Decorating Services*

**Qualified female
Painter and Decorator.**

10 years experience

Interior and Exterior painting

Wallpapering

No job too small

Free quote

Email:

elwoodpainting@tiscali.co.uk

Telephone:

01634 308933

07738083474

Boxley Timber & Fencing Supplies



Quality

Sheds & Summerhouses.

Sleepers & Decking.

Gates & Trellis made to size.

All types of Fencing. Collection/Delivery

Stockist of tools: DeWalt, Bahco, Ryobi &

Quality Faithfull Tools

A FAMILY RUN BUSINESS OFFERING

FRIENDLY PROFESSIONAL ADVICE.

BOXLEY SAWMILL,

PILGRIMS WAY,

BOXLEY, MAIDSTONE,

ME14 3EB. Tel: 01622 753953



QUALIFIED FEMALE PLUMBER

Specialising in
small
maintenance &
repairs



For a professional, friendly and
reliable service—

CALL RACHEL: 07731 756947
www.haslerplumbing.co.uk

CLARKES FUNERAL SERVICE

(R.G. KINGSBURY M.M.S. Dip)

WE ARE AN INDEPENDENT FAMILY BUSINESS OFFERING
A 24 HOUR, PERSONAL, CARING SERVICE.

ARRANGEMENTS CAN BE MADE AT OUR OFFICE
OR IN THE COMFORT OF YOUR OWN HOME

- **PRE-PAID FUNERAL PLANS AVAILABLE**
- **PRIVATE CHAPEL OF REST**
- **MEMORIALS SUPPLIED** ● **ALL AREAS COVERED**



31 High Street, Snodland Tel: 01634 240458



FOR MORE INFORMATION, OR TO BOOK, PLEASE GET IN TOUCH:

01634 254009 - bookings@farleighcoaches.com

Pop into our travel office on Vicarage Lane, Hoo, ME3 9LB

DAY EXCURSIONS

Highclere Castle

*The Home of
Downton Abbey*

Tuesday 6th April
&

Wednesday 18th August

Adult £47 Child £43

Kew Gardens

Saturday 10th April

&

Saturday 19th June

£42

Leonardslee Lakes & Gardens - Sunday 25th April - £40

Runnymede to Windsor Cruise - Thursday 29th April - £41

Duxford or Cambridge - Saturday 8th May - £32

Lakeside Shopper - Wednesday 12th May - £15

St Albans on Market Day - Wednesday 19th May - £29

Kent Country Tour & Pub Lunch - Tuesday 25th May - £39

Blenheim Palace Food Festival - Saturday 29th May - £54

Tenterden & Rye on Market Day - Thursday 10th June - £29

Broadstairs or Margate - Saturday 12th June - £29

Ely on Market Day - Thursday 17th June - £31

Herne Bay - Wednesday 23rd June - £28

Blenheim Palace Flower Show - Friday 25th June - £54

Battle of Britain Air Show - Saturday 26th June - £44

HOLIDAYS

Cricket St Thomas,

Warner Resort

26th March

3 Nights Dinner,
Bed & Breakfast

From **£299**

Isle of Man

31st March

Rutland Hotel

5 Nights Dinner,
Bed & Breakfast

From **£559**

Bournemouth

11th April

Durley Dean Hotel

2 Nights DBB

From **£199**

*Optional excursion
to Monkey World*

Isle of Wight

Trouville Hotel,

Sandown

Mon 24th April -

4 Nights DBB, **339**

Fri 16th July -

5 Nights DBB, **449**

Norfolk Broads

3rd May

Dunston Hall Hotel

4 Nights Dinner

Bed & Breakfast

From **£449**

Tempting Tenby

16th May

The Belgrave Hotel

4 Nights Dinner

Bed & Breakfast

From **£359**

Lake District

27th June

Cumbria Grand

Hotel

5 Nights Dinner

Bed & Breakfast

From **£479**

Edinburgh

Military Tattoo

16th August

Rob Roy Hotel

5 Nights Dinner

Bed & Breakfast

From **£479**

Full itineraries can be found on our website.

FOR PRIVATE VEHICLE HIRE, PLEASE CALL 01634 254000, OR EMAIL

INFO@FARLEIGHCOACHES.COM FOR A FREE QUOTATION.

ADVERTISING IN THIS MAGAZINE

THIS MAGAZINE IS A FREE, PUBLICATION.

It can be viewed on-line: www.wouldhamchurch.org.uk

<http://www.burhampc.kentparishes.gov.uk/> &

<http://www.wouldhampc.com>

Produced monthly by volunteers for Burham, Wouldham & Peters Village. (*except January & August*)

and a printed copy can be delivered to any residents who request one.

Thank you.

The deadline for copy is always on the 10th day of the previous month but please contact the Editor earlier to agree the content and reserve the space. (*see outside back cover*)

2020 ADVERTISING SIZES & PRICES.

Size 1. - 6cm x 6cm. 1/6 th of A5 page.	1 issue £15	5 issues £65	10 issues £120
Size 2. – 12cm width x 6cm height. 1/3 rd of A5 page	1 issue £20	5 issues £90	10 issues £165
Size 3 – 12cm width x 12cm height 2/3 rd of A5 page.	1 issue £35	5 issues £160	10 issues £288
Full page. A5 12cm width x 19cm height	1 issue £40	5 issues £180	10 issues £330

**YOU CAN
REQUEST TO RECEIVE A
PRINTED COPY OF THIS MAGAZINE
DELIVERED TO YOU....**

We need your name, address & contact details.

Please phone or e-mail your Parish Clerk:

**WOULDHAM PC CLERK—
07904 281522 *clerk@wouldhampc.co.uk***

**BURHAM PC CLERK—
01634 685936 *pam@burhampc.co.uk***

We are leaving some printed copies in the following places:

BURHAM

**Vale Bakery, Frosts, Parish
Office, Methodist Church &
St Mary's Old Church**

WOULDHAM

**Watermans Arms &
All Saints Church**

The Community Magazine for Burham, Wouldham, Peters Village

The deadline for copy is always on the 10th day of the previous month but please contact the Editor earlier to agree the content and reserve the space.

Editor: Mary Davis, Tel. 01634 869650.

e-mail: zero.mexdavis247@btinternet.com

Please note; there are combined July/August & December/January editions.

A Note From The Editor

We hope you enjoy reading this Magazine.

We welcome your news items and articles.

However, we reserve the right to edit or not to publish.

The publication of any advertisement does not carry the Church's endorsement.

Placing loose inserts into the Magazine is not permitted.